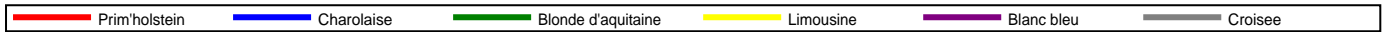
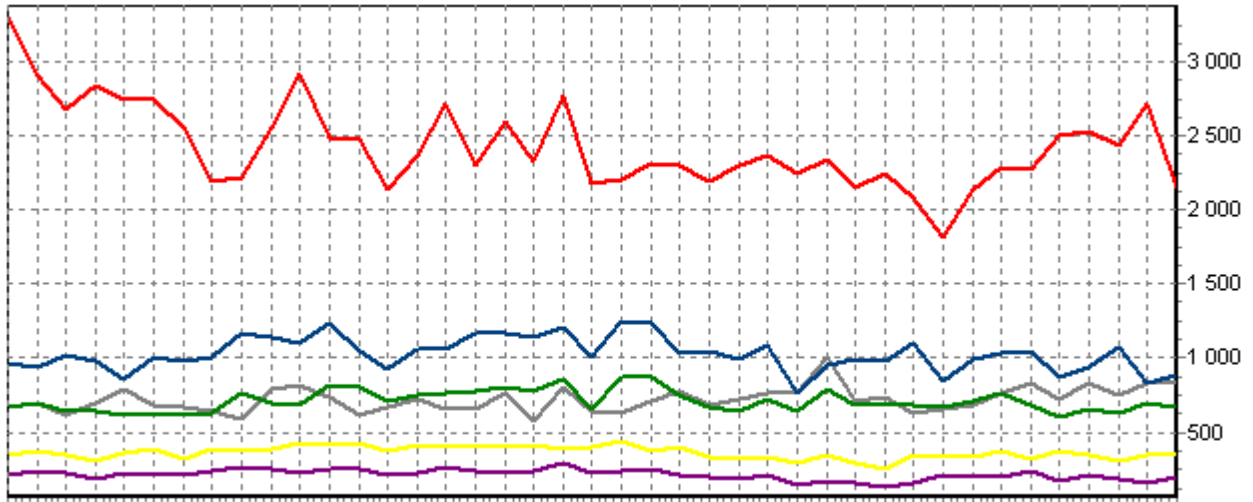
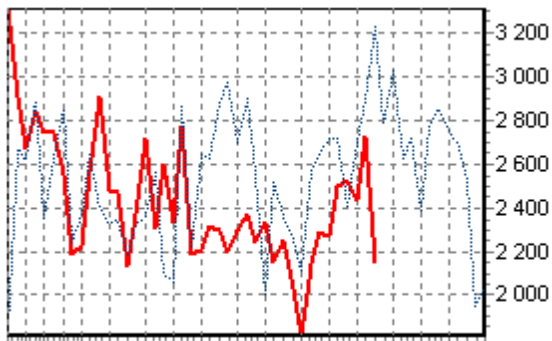


REPARTITION DES RACES (nb têtes/semaine)

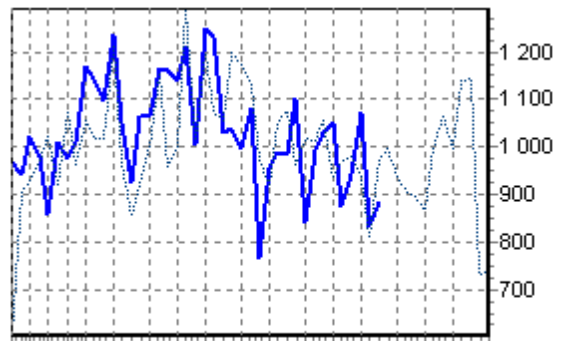


ACTIVITE HEBDOMADAIRE PRIM'HOLSTEIN (66)



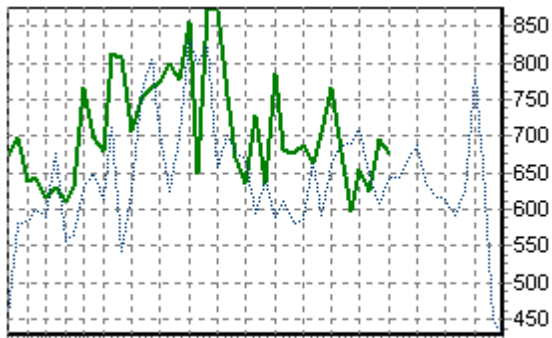
1 3 5 7 9 11 12 16 19 22 26 29 33 36 39 43 46 49 53

ACTIVITE HEBDOMADAIRE CHAROLAISE (38)



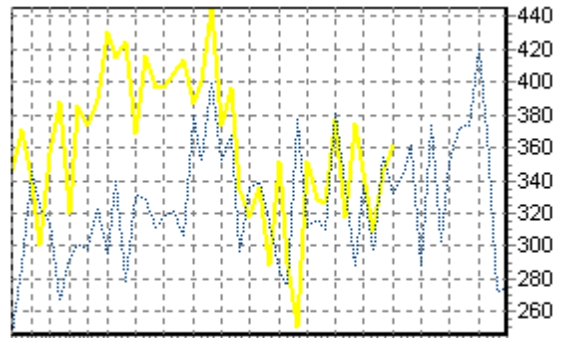
1 3 5 7 9 11 12 16 19 22 26 29 33 36 39 43 46 49 53

ACTIVITE HEBDOMADAIRE BLONDE D'AQUITAINE (79)



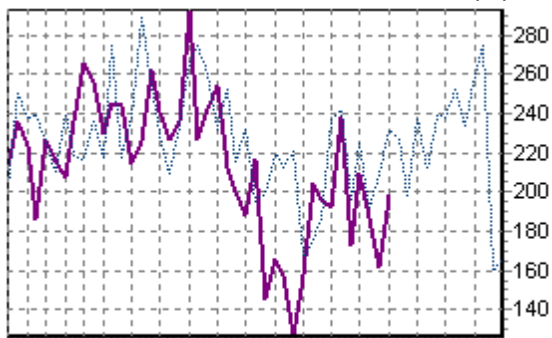
1 3 5 7 9 11 14 17 20 23 26 29 32 35 38 41 44 47 50 53

ACTIVITE HEBDOMADAIRE LIMOUSINE (34)



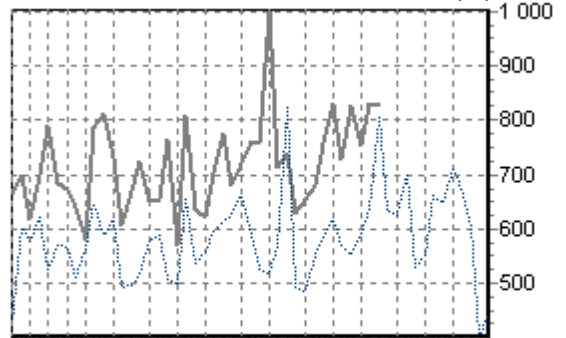
1 3 5 7 9 11 14 17 20 23 26 29 32 35 38 41 44 47 50 53

ACTIVITE HEBDOMADAIRE BLANC BLEU (25)



1 3 5 7 9 11 14 17 20 23 26 29 32 35 38 41 44 47 50 53

ACTIVITE HEBDOMADAIRE CROISEE (39)



1 3 5 7 9 12 16 19 22 26 29 33 36 39 43 46 49 53