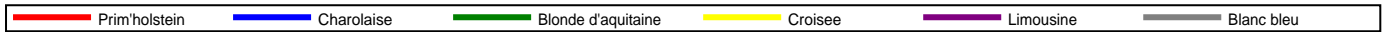
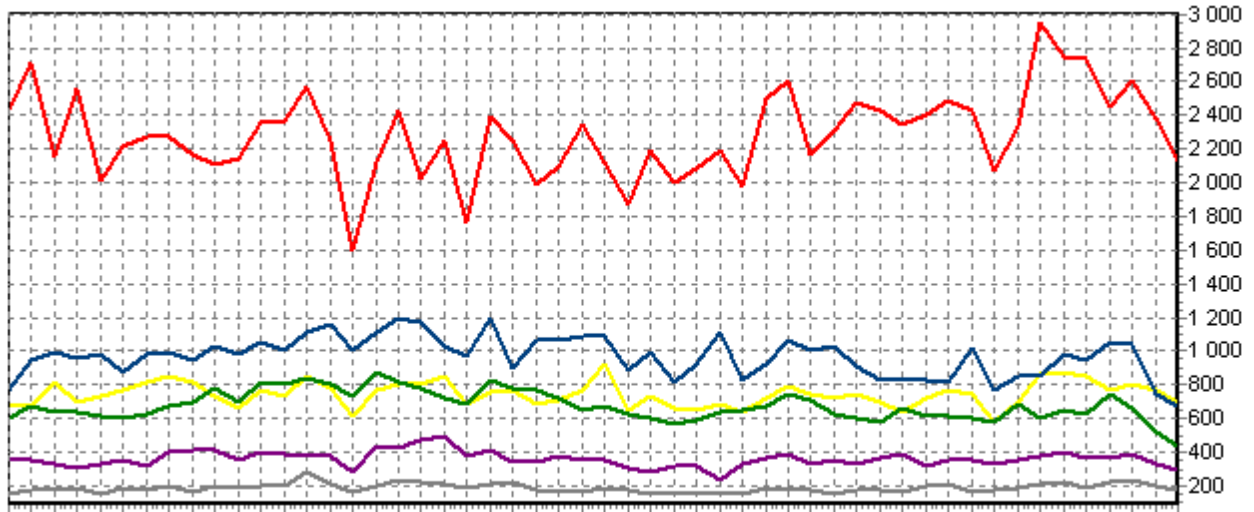
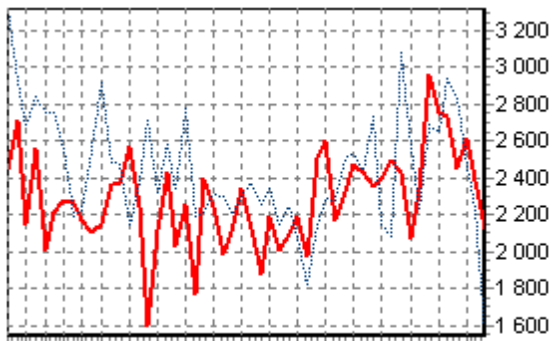


**REPARTITION DES RACES (nb têtes/semaine)**

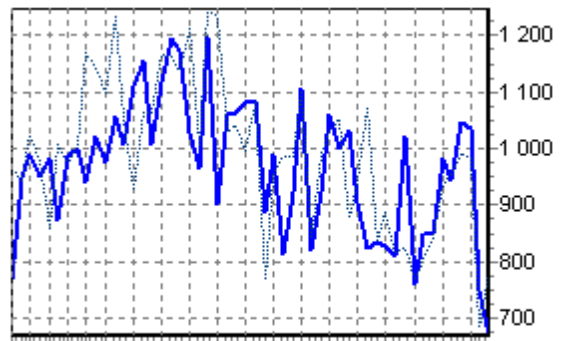


**ACTIVITE HEBDOMADAIRE PRIM'HOLSTEIN (66)**



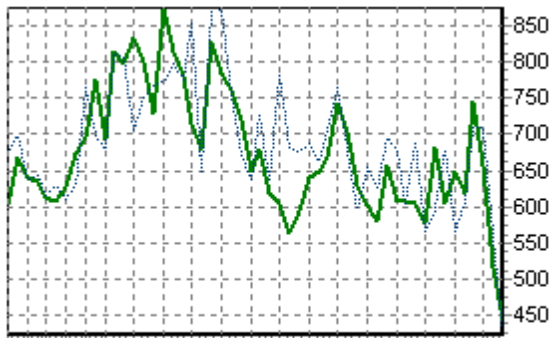
1 3 5 7 9 11 14 17 20 23 26 29 32 35 38 41 44 47 50

**ACTIVITE HEBDOMADAIRE CHAROLAISE (38)**



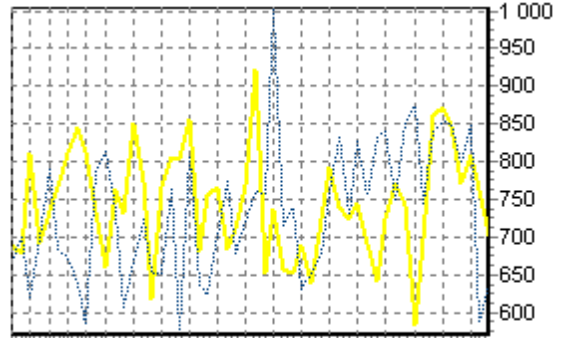
1 3 5 7 9 11 14 17 20 23 26 29 32 35 38 41 44 47 50

**ACTIVITE HEBDOMADAIRE BLONDE D'AQUITAINE (79)**



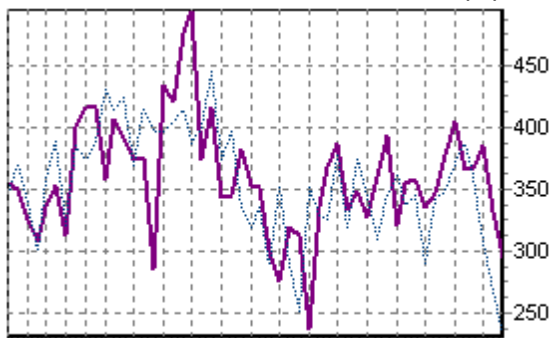
1 3 5 7 9 11 14 17 20 23 26 29 32 35 38 41 44 47 50

**ACTIVITE HEBDOMADAIRE CROISEE (39)**



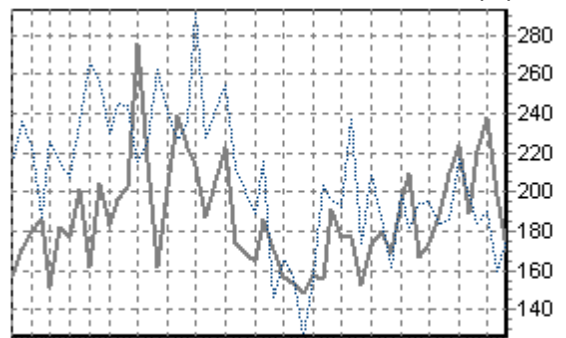
1 3 5 7 9 11 14 17 20 23 26 29 32 35 38 41 44 47 50

**ACTIVITE HEBDOMADAIRE LIMOUSINE (34)**



1 3 5 7 9 11 14 17 20 23 26 29 32 35 38 41 44 47 50

**ACTIVITE HEBDOMADAIRE BLANC BLEU (25)**



1 3 5 7 9 11 14 17 20 23 26 29 32 35 38 41 44 47 50